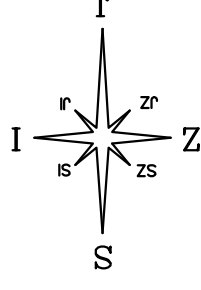


STAMBENA ZGRADA B - STARA NOVALJA OTOK PAG

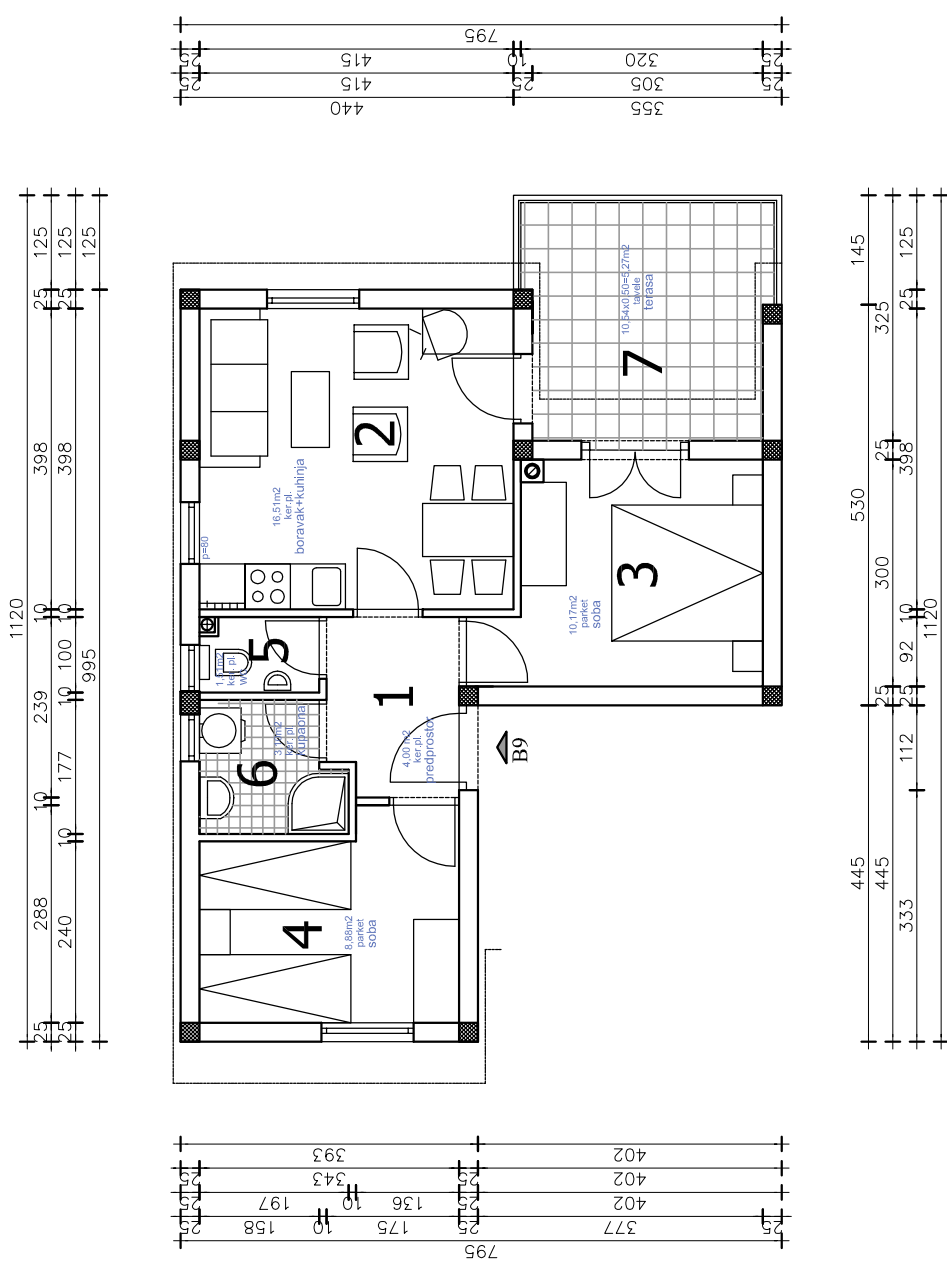
STAN B9

STAN "B9" - iskaz netto površina

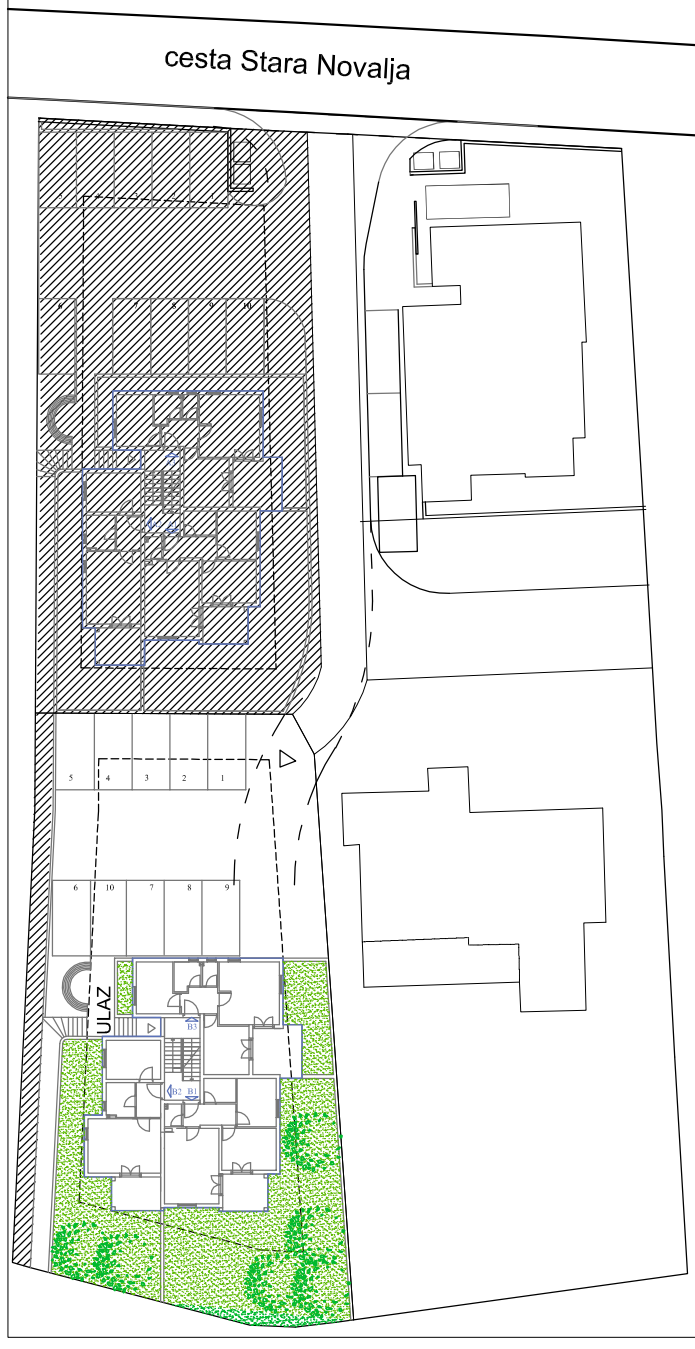
1. PREDPROSTOR	4,00 m ²
2. BORAVAK + KUHINJA	16,51 m ²
3. SOBA	10,17 m ²
4. SOBA	8,88 m ²
5. WC	1,50 m ²
6. KUPAONA	3,10 m ²
7. TERASA	10,54x0,25=2,64 m ²
ukupno	46,80 m²



TLOCRT STANA B9 1:100



SITUACIJA 1:1000



TLOCRT 2. KATA 1:250

