

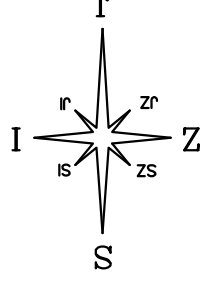
# STAMBENA ZGRADA B - STARA NOVALJA OTOK PAG

## STAN B8

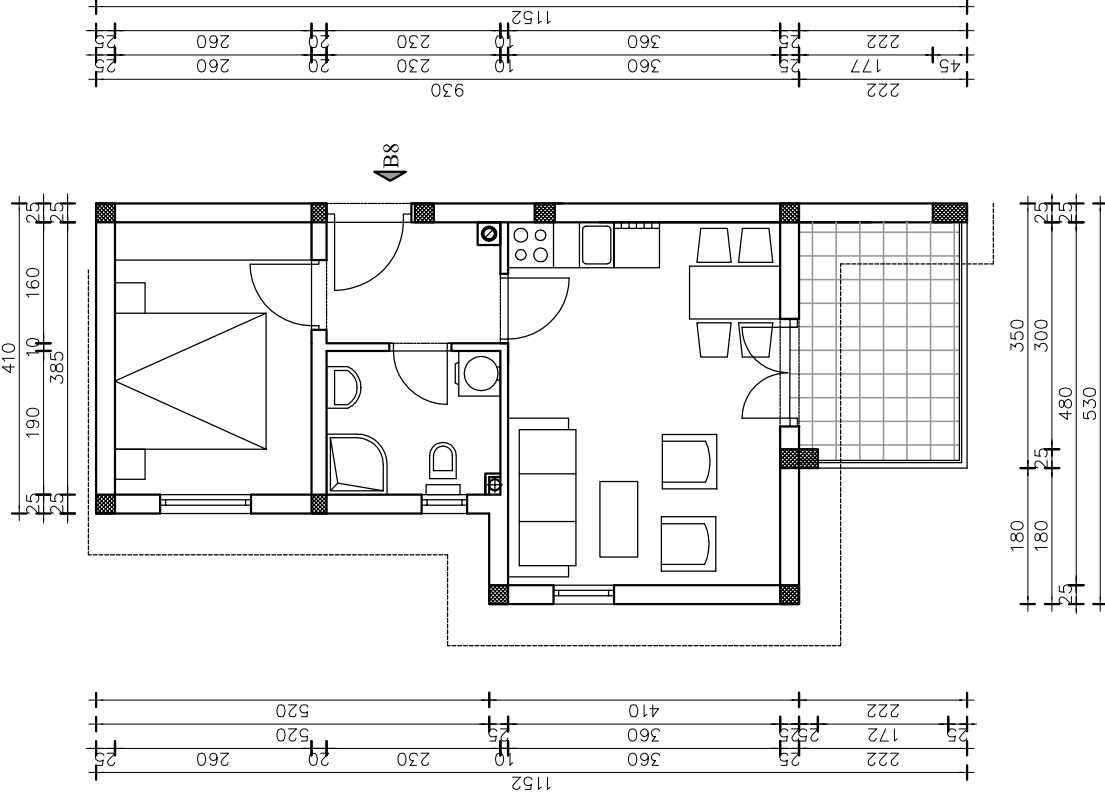
### STAN "B8" - iskaz netto površina

1.	PREDPROSTOR	3,59 m <sup>2</sup>
2.	BORAVAK I KUHINJA	17,28 m <sup>2</sup>
3.	SOBA	9,36 m <sup>2</sup>
4.	KUPAONA	4,31 m <sup>2</sup>
5.	TERASA	7,61x0,25=1,77 m <sup>2</sup>

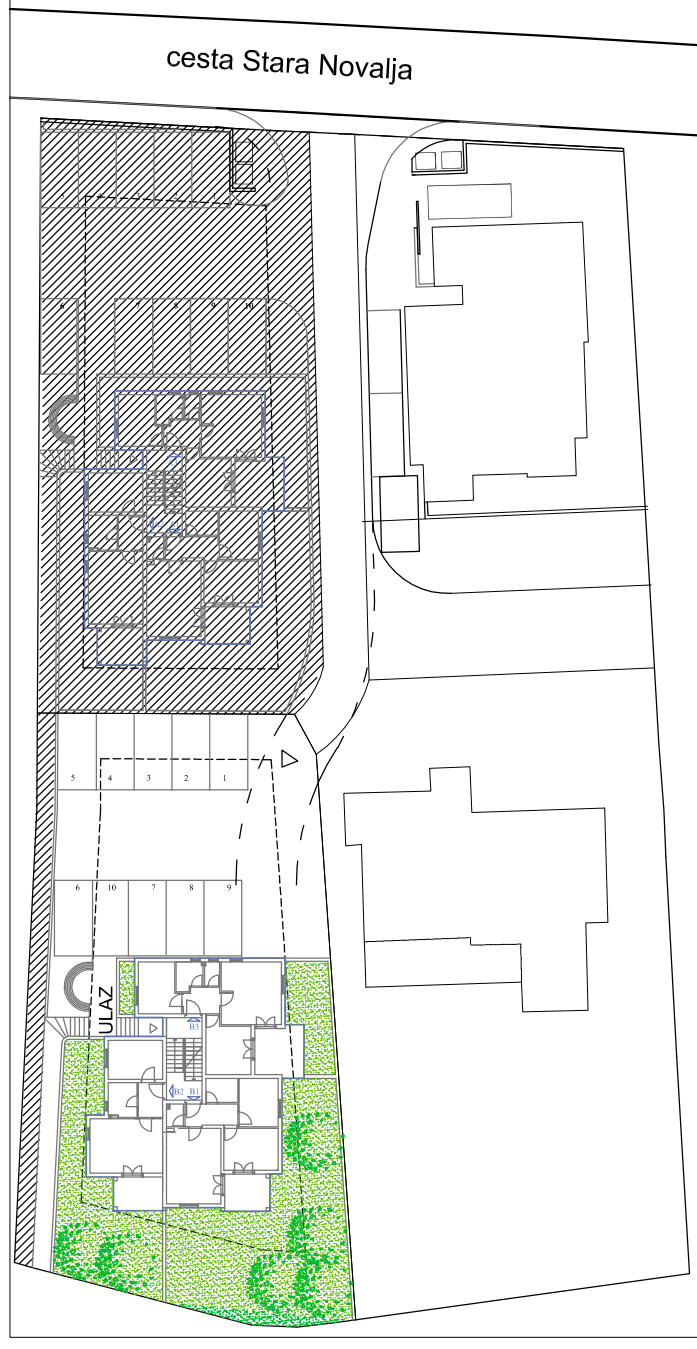
ukupno: 36,31 m<sup>2</sup>



TLOCRT STANA B8 1:100



SITUACIJA 1:1000



TLOCRT 2. KATA 1:250

