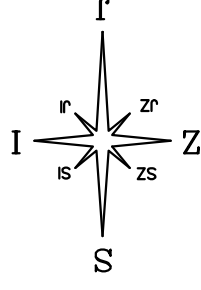


# STAMBENA ZGRADA B - STARA NOVALJA OTOK PAG

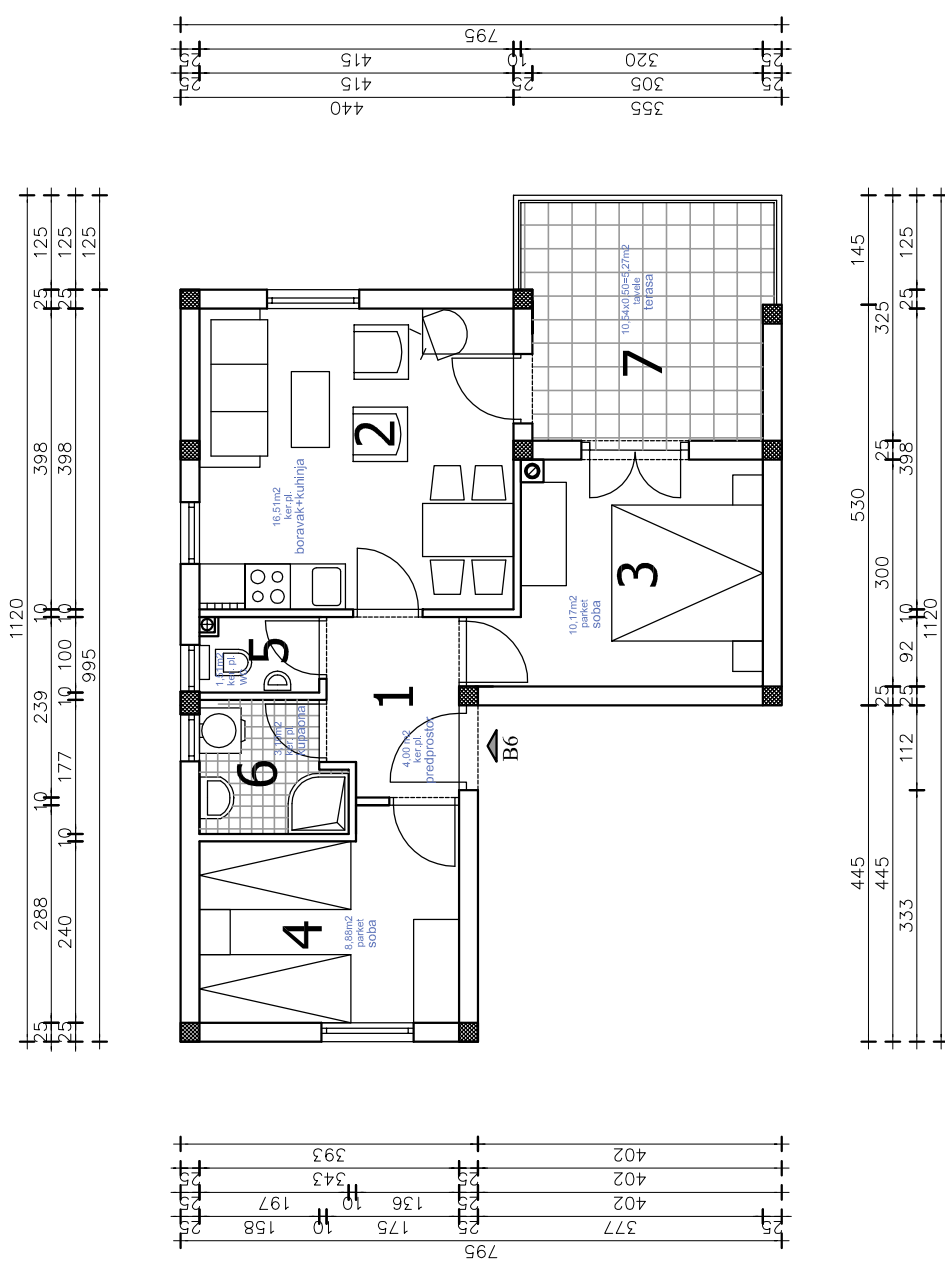
## STAN B6

### STAN "B6" - iskaz netto površina

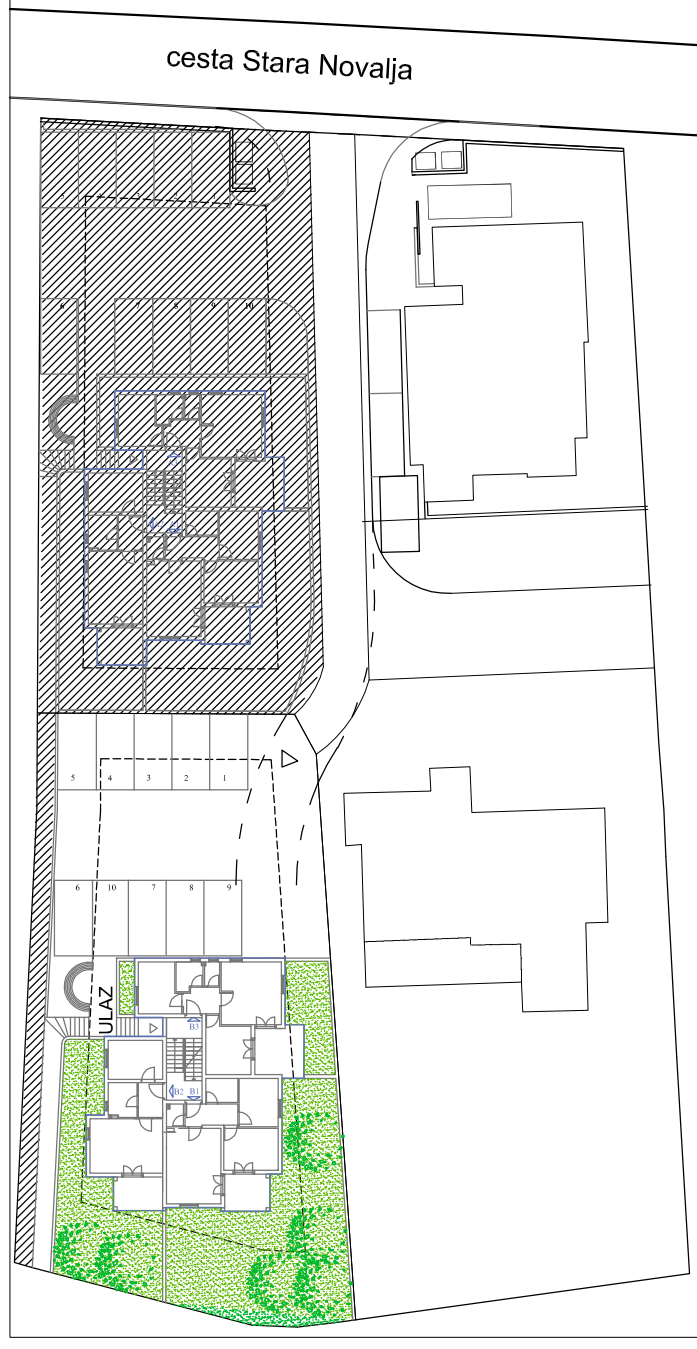
1.	PREDPROSTOR	4,00 m <sup>2</sup>
2.	BORAVAK + KUHINJA	16,51 m <sup>2</sup>
3.	SOBA	10,17 m <sup>2</sup>
4.	SOBA	8,88 m <sup>2</sup>
5.	WC	1,51 m <sup>2</sup>
6.	KUPAONA	3,10 m <sup>2</sup>
7.	TERASA	10,54x0,50=5,27 m <sup>2</sup>
ukupino		49,44 m <sup>2</sup>



### TLOCRT STANA B6 1:100



### SITUACIJA 1:1000



### TLOCRT 1. KATA 1:250

