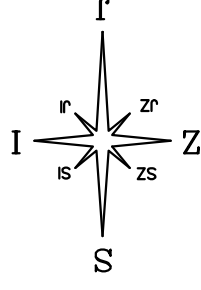


STAMBENA ZGRADA B - STARA NOVALJA OTOK PAG

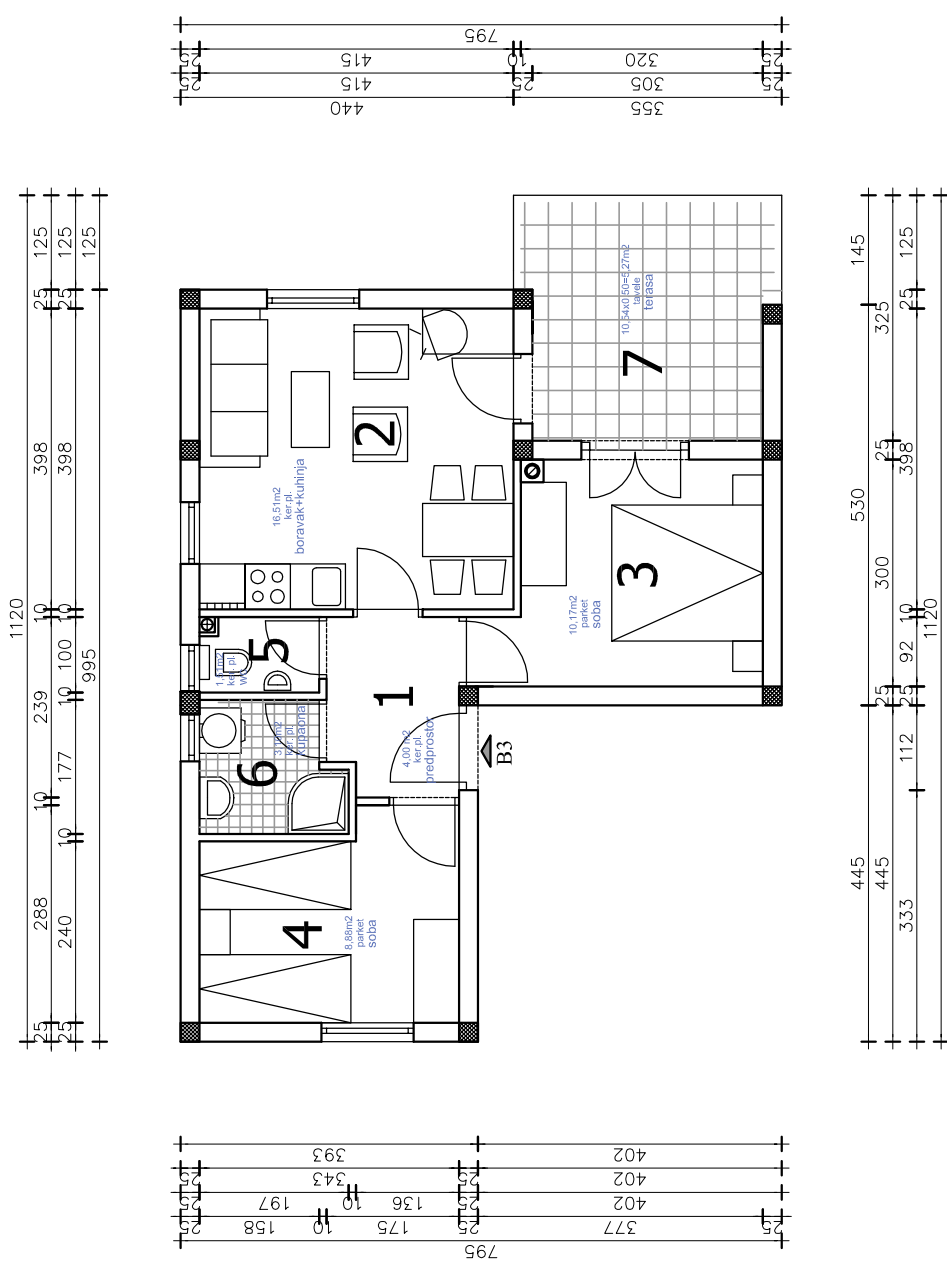
STAN B3

STAN "B3" - iskaz netto površina

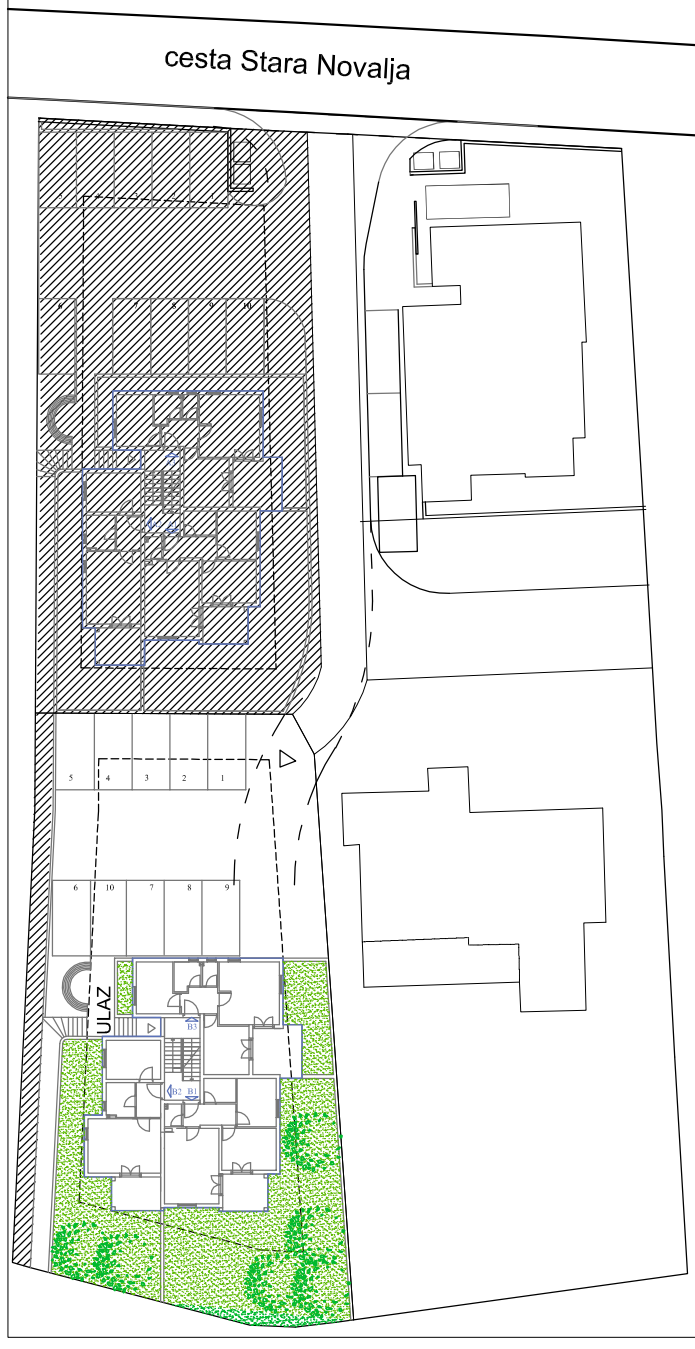
1. PREDPROSTOR	4,00 m ²
2. BORAVAK + KUHINJA	16,51 m ²
3. SOBA	10,17 m ²
4. SOBA	8,88 m ²
5. WC	1,51 m ²
6. KUPAONA	3,10 m ²
7. TERASA	10,54x0,50=5,27 m ²
ukupino	49,44 m²



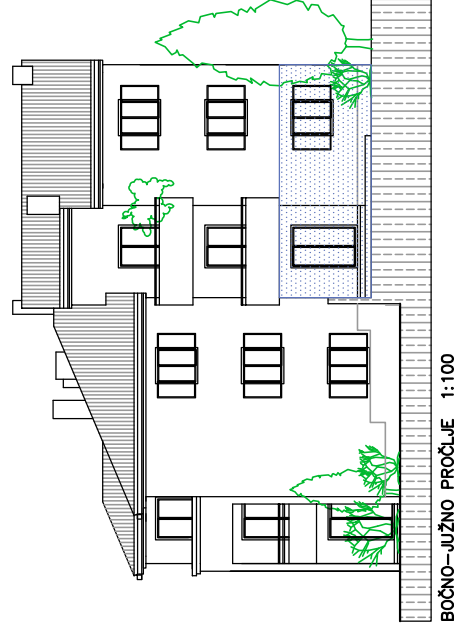
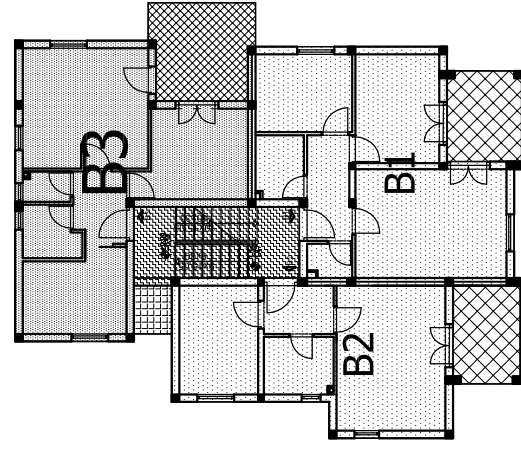
TLOCRT STANA B3 1:100



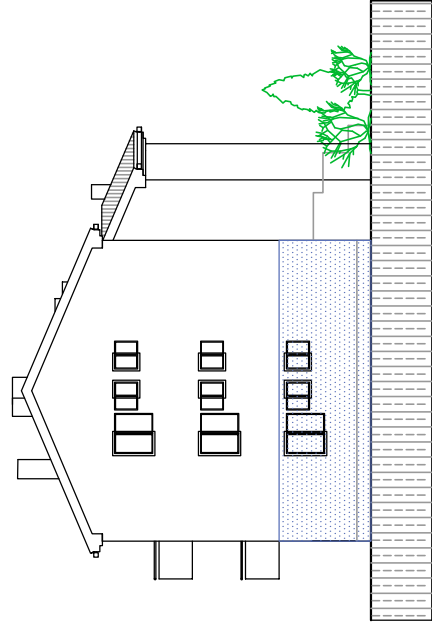
SITUACIJA 1:1000



TLOCRT PRIZEMLJA 1:250



BOČNO-JUŽNO PROČELJE 1:100



ISTOČNO-JUŽNO PROČELJE 1:100