

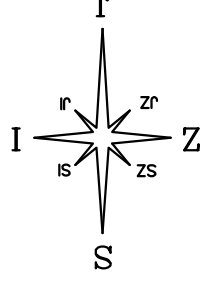
STAMBENA ZGRADA B - STARA NOVALJA OTOK PAG

STAN B2

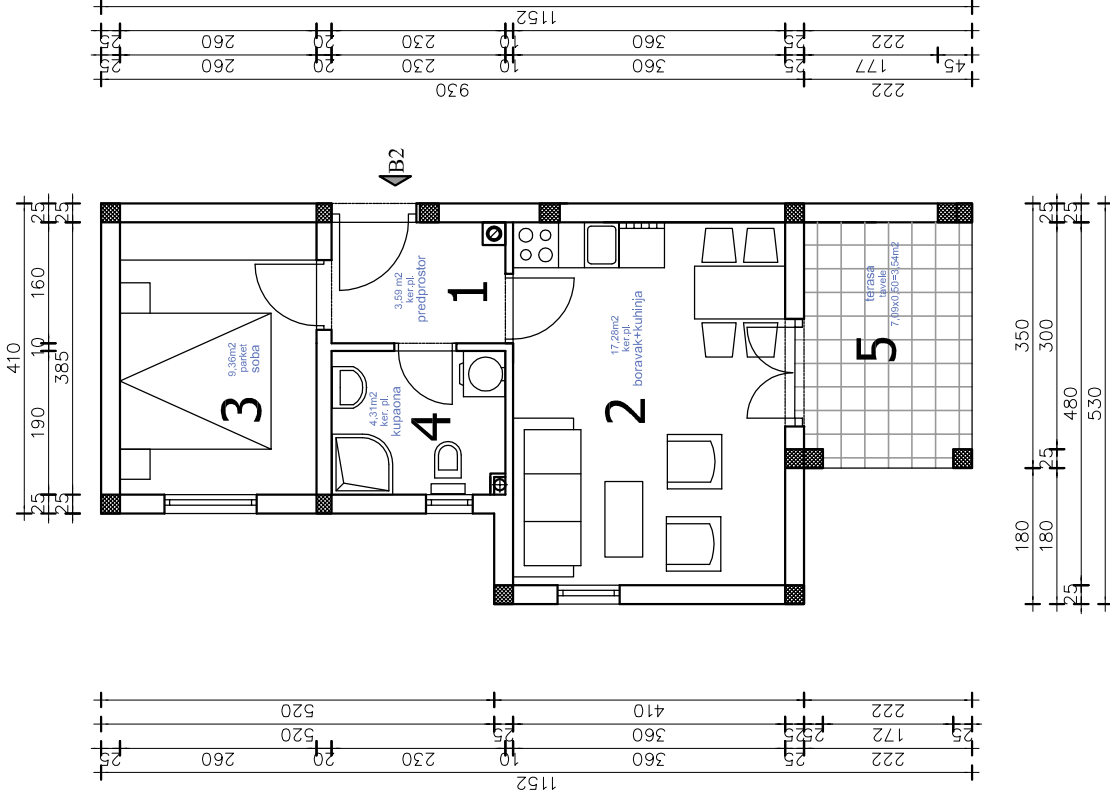
STAN "B2" - iskaz netto površina

1. PREDPROSTOR	3,59 m ²
2. BORAVAK I KUHINJA	17,28 m ²
3. SOBA	9,36 m ²
4. KUPAONA	4,31 m ²
5. TERASA	7,09x0,50=3,54 m ²

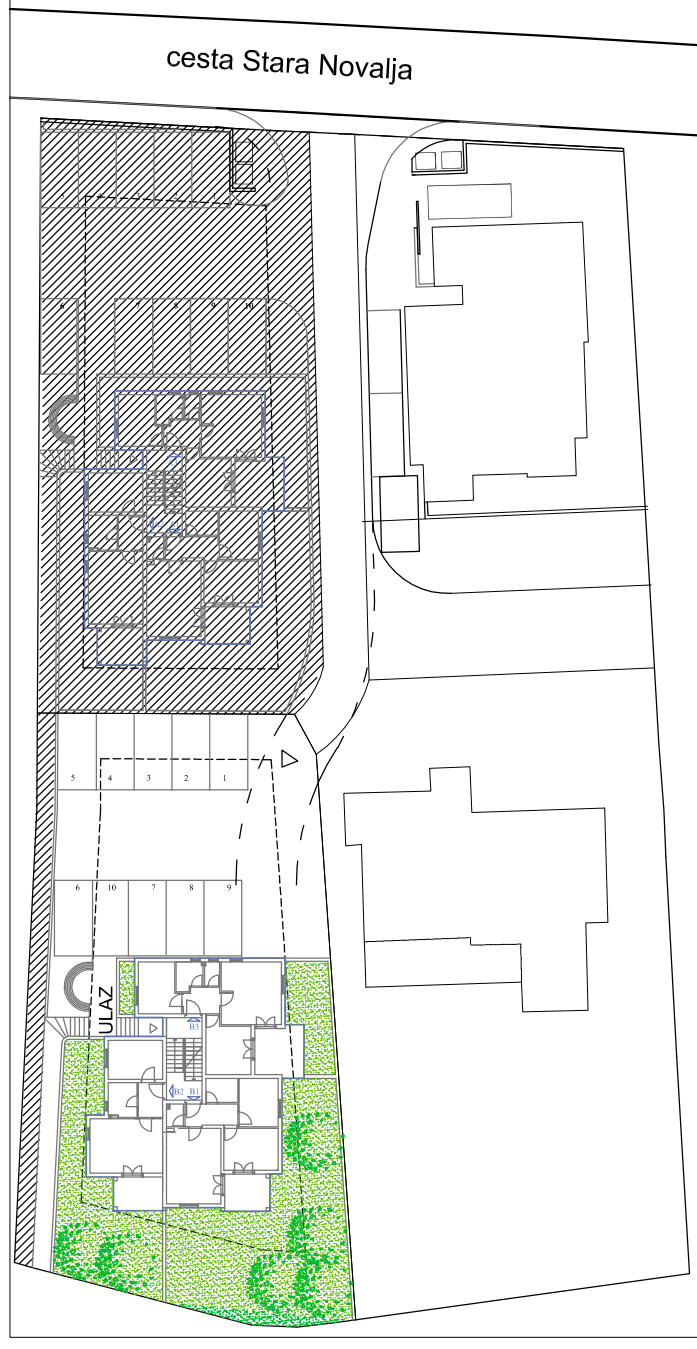
ukupino: **38,08 m²**



TLOCRT STANA B2 1:100



SITUACIJA 1:1000



TLOCRT PRIZEMLJA 1:250

