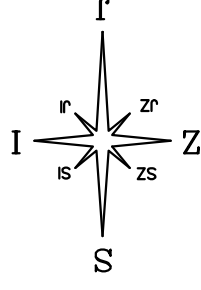


STAMBENA ZGRADA A - STARA NOVALJA OTOK PAG

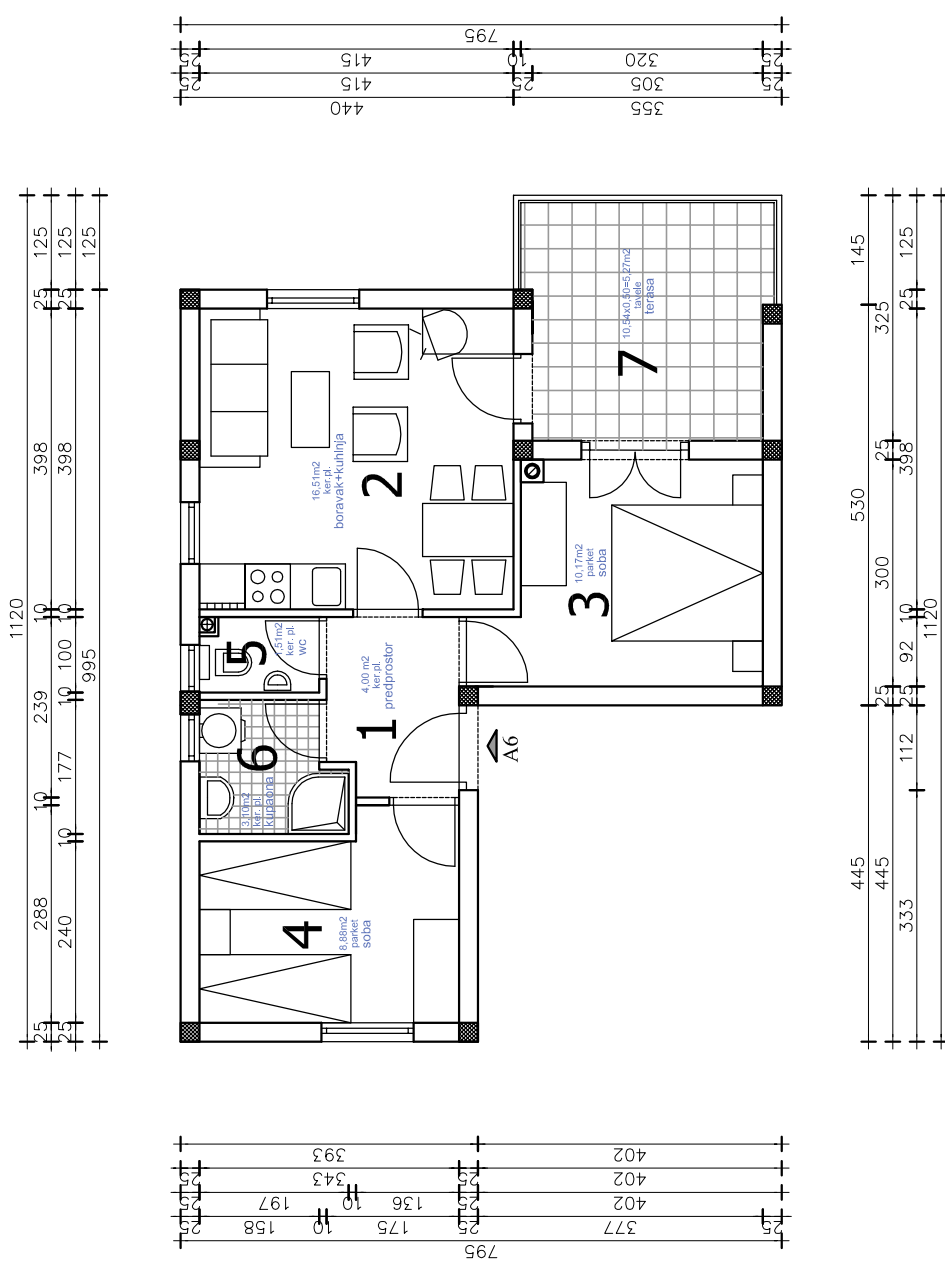
STAN A6

STAN "A6" - iskaz netto površina

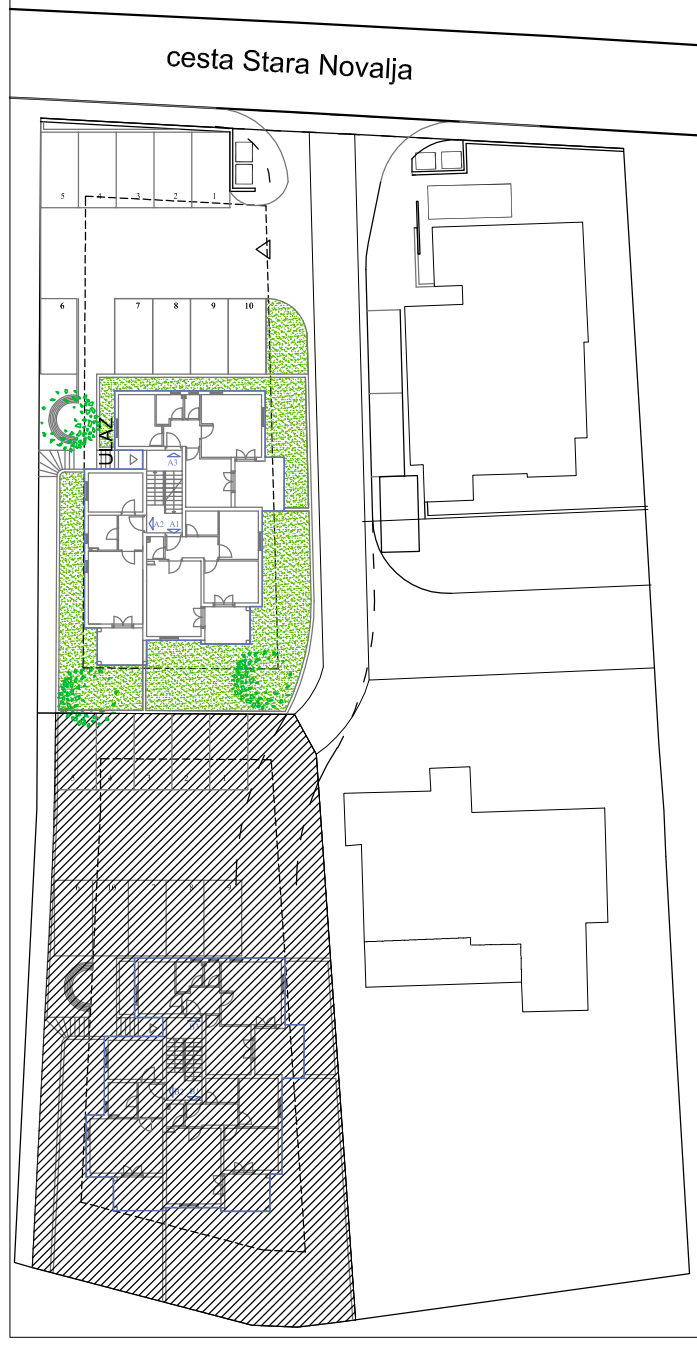
| | | |
|---------|-------------------|--------------------------------|
| 1. | PREDPROSTOR | 4,00 m ² |
| 2. | BORAVAK + KUHINJA | 16,51 m ² |
| 3. | SOBA | 10,17 m ² |
| 4. | SOBA | 8,88 m ² |
| 5. | WC | 1,51 m ² |
| 6. | KUPAONA | 3,10 m ² |
| 7. | TERASA | 10,54x0,50=5,27 m ² |
| ukupino | | 49,44 m ² |



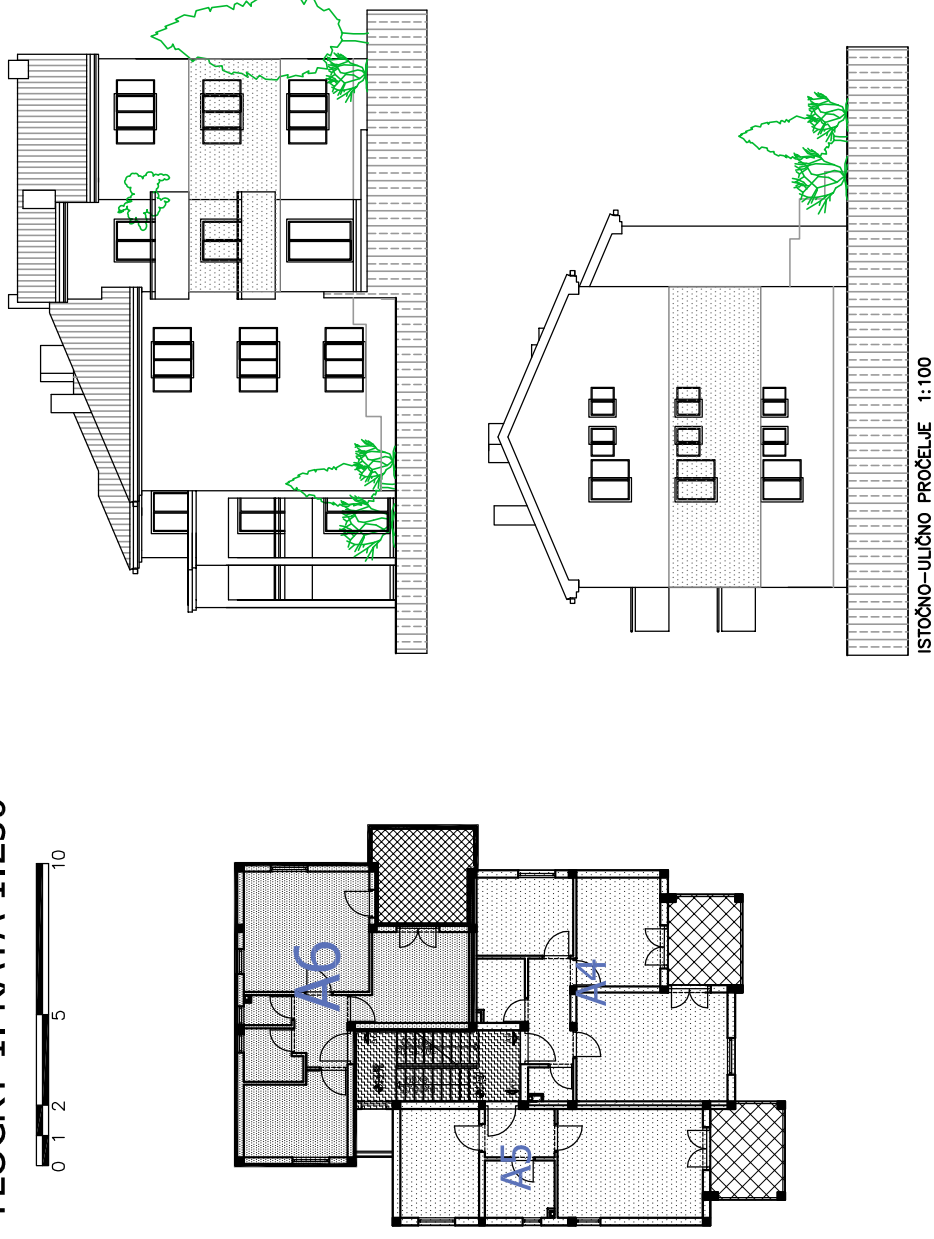
TLOCRT STANA A6 1:100



SITUACIJA 1:1000



TLOCRT 1. KATA 1:250



ISTOČNO-ULIČNO PROČELJE 1:100