

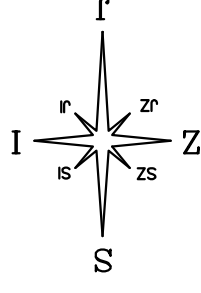
# STAMBENA ZGRADA A - STARA NOVALJA OTOK PAG

## STAN A5

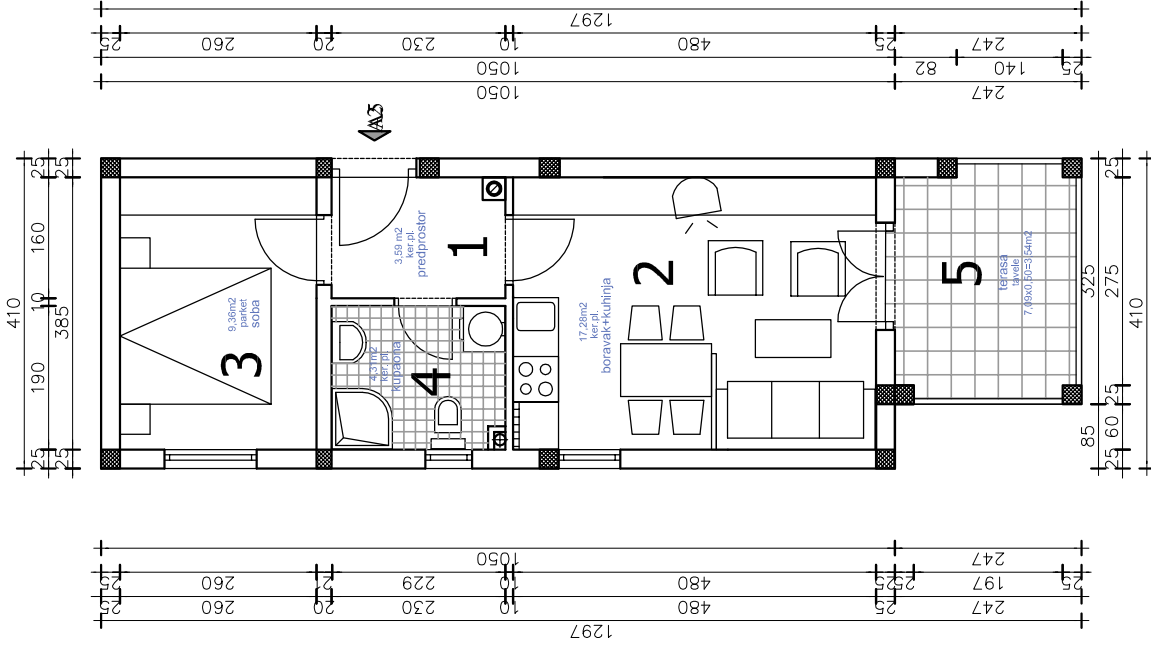
### STAN "A5" - iskaz netto površina

1. PREDPROSTOR	3,59 m <sup>2</sup>
2. BORAVAK I KUHINJA	17,28 m <sup>2</sup>
3. SOBA	9,36 m <sup>2</sup>
4. KUPAONA	4,30 m <sup>2</sup>
5. TERASA	7,61x0,50=3,80 m <sup>2</sup>

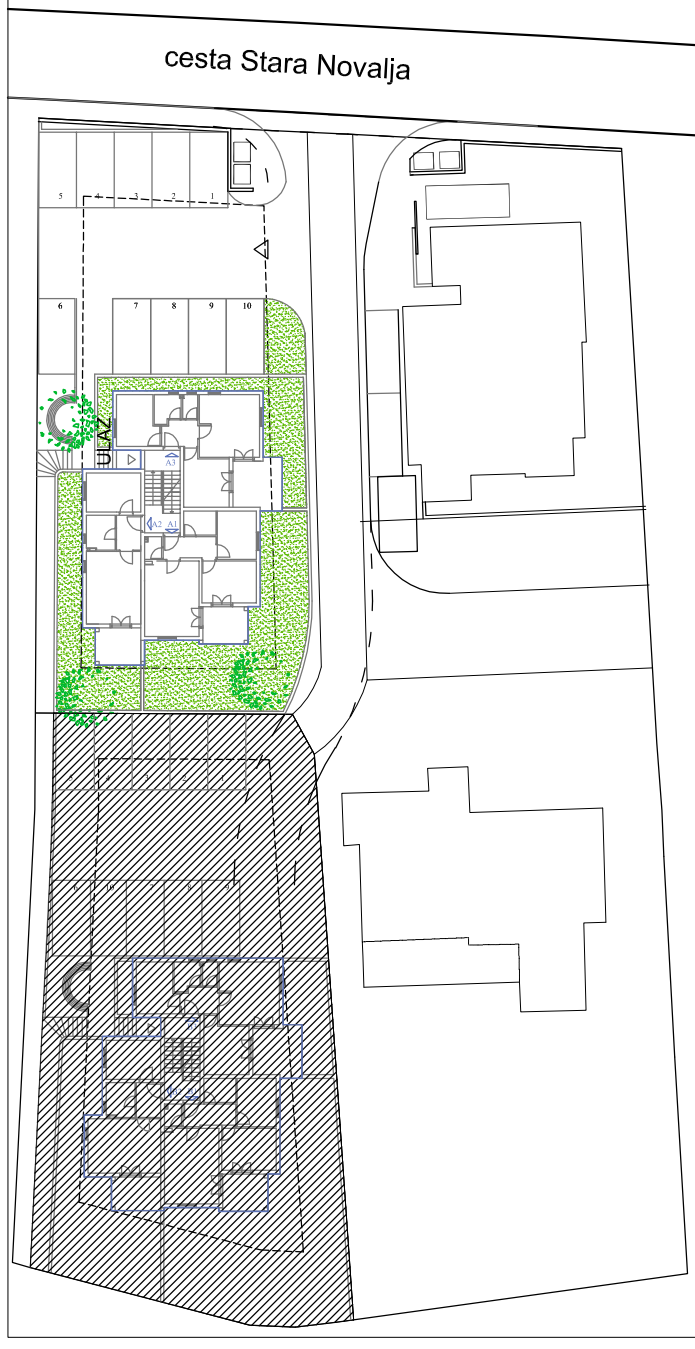
ukupno: 38,33 m<sup>2</sup>



### TLOCRT STANA A5 1:100



### SITUACIJA 1:1000



### TLOCRT 1. KATA 1:250

