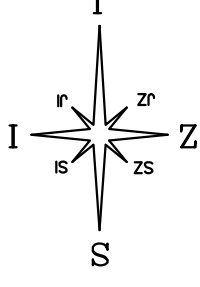


STAMBENA ZGRADA A - STARA NOVALJA OTOK PAG

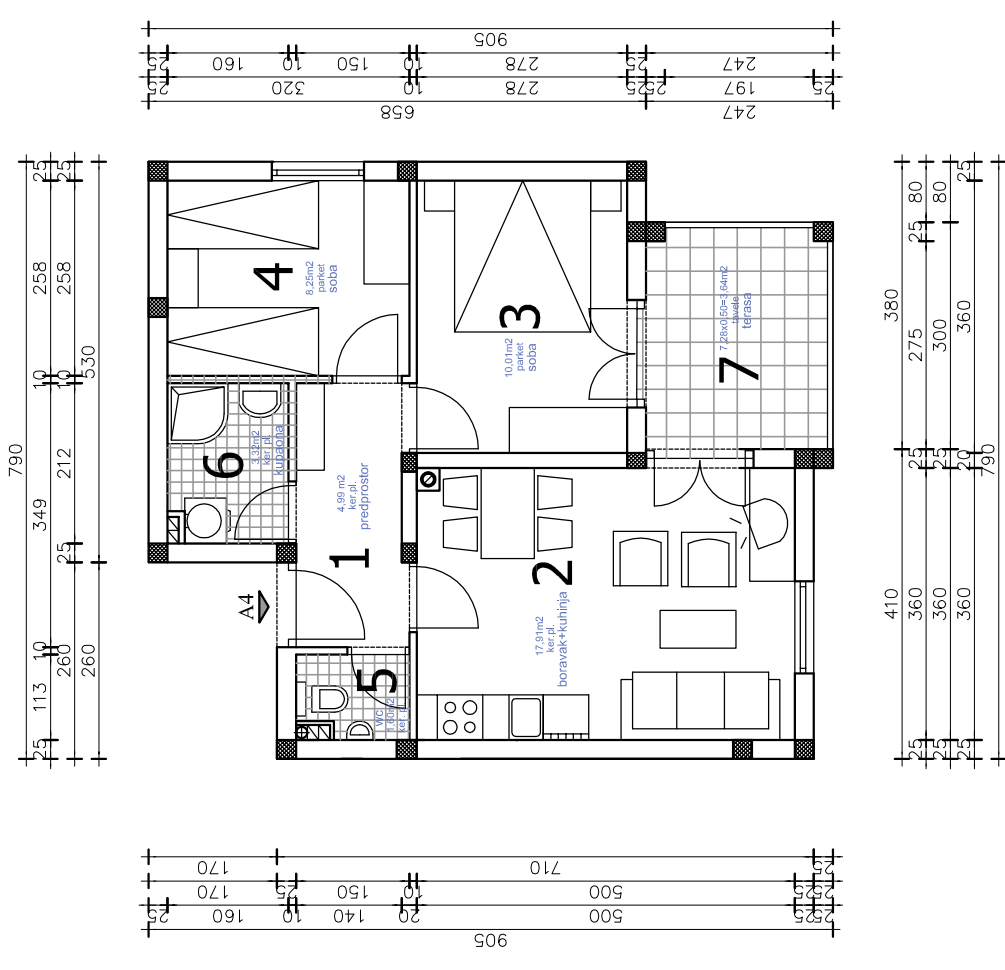
STAN A4

STAN "A4" - iskaz netto površina

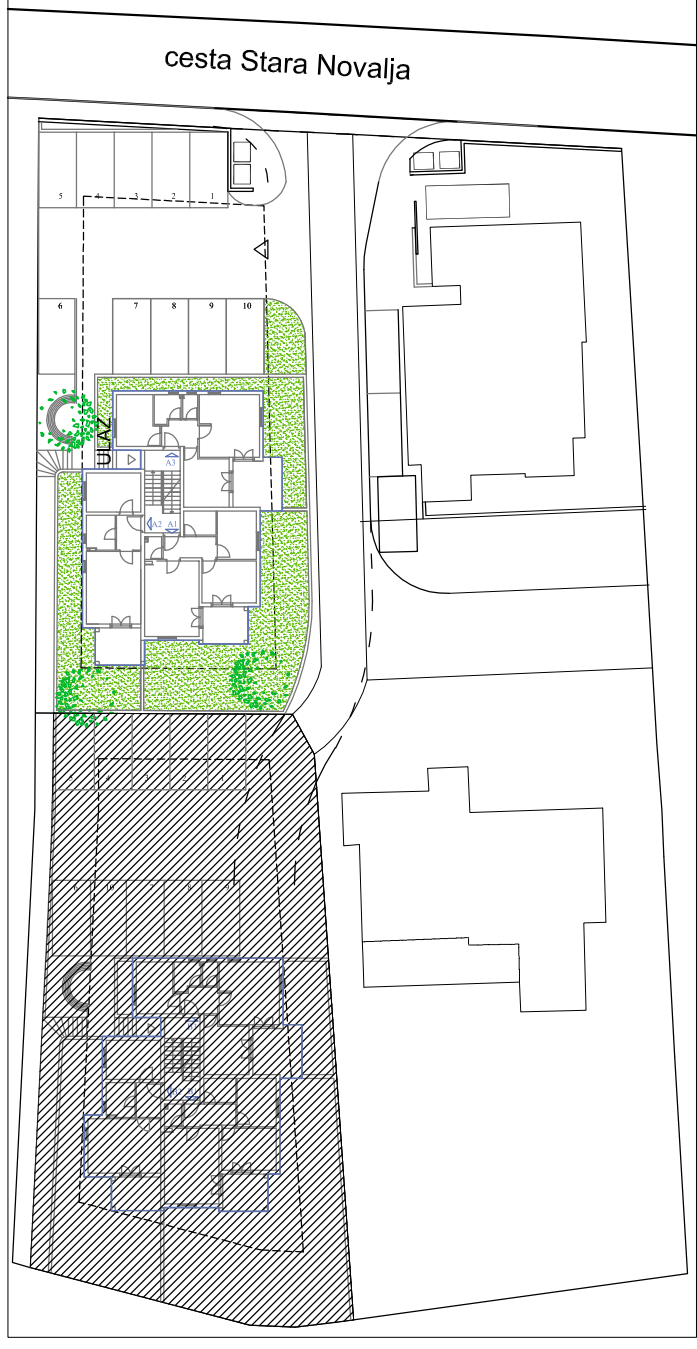
1. PREDPROSTOR	4,99 m ²
2. BORAVAK+KUHINJA	17,91 m ²
3. SOBA	10,01 m ²
4. SOBA	8,25 m ²
5. WC	1,57 m ²
6. KUPAONA	3,29 m ²
7. TERASA	7,28x0,50= 3,64 m ²
ukupno	49,66 m²



TLOCRT STANA A4 1:100



SITUACIJA 1:1000



TLOCRT 1. KATA 1:250

