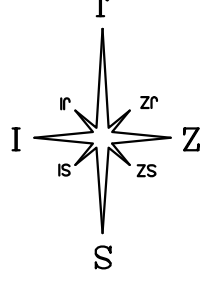


STAMBENA ZGRADA A - STARA NOVALJA OTOK PAG

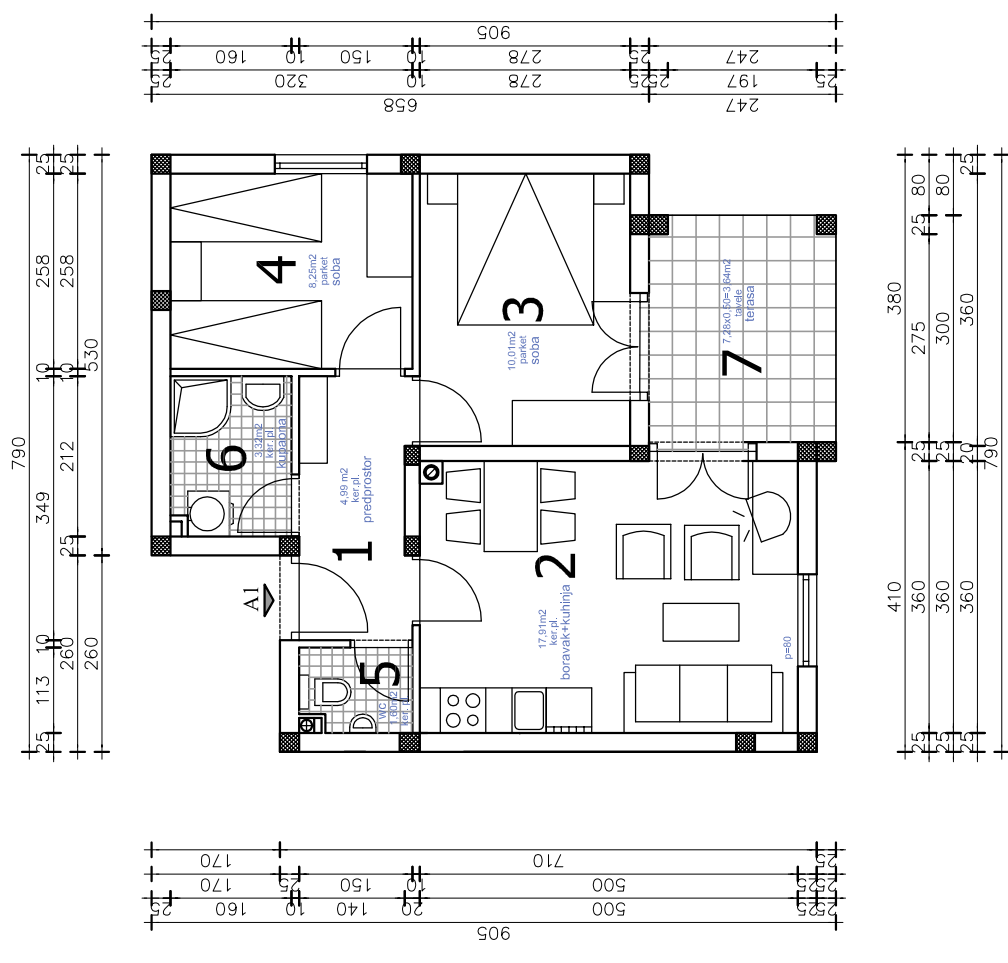
STAN A1

STAN "A1" - iskaz netto površina

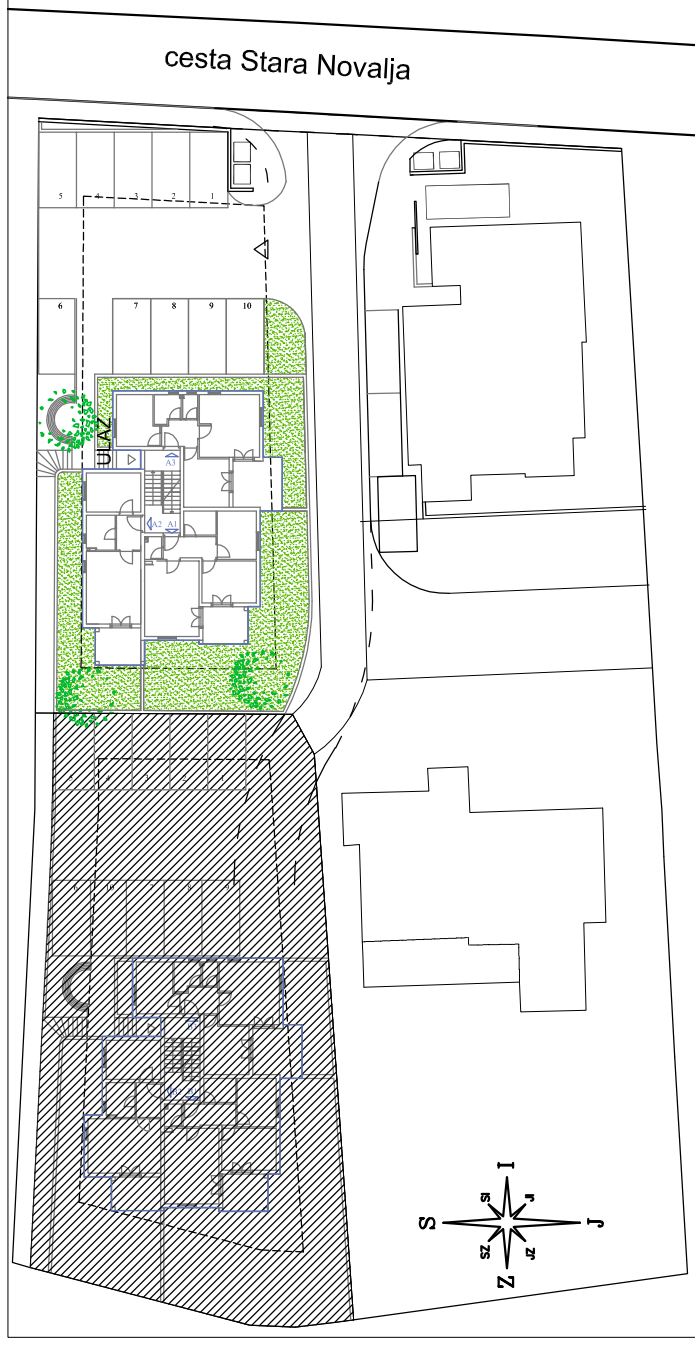
1.	PREDPROSTOR	4,99 m ²
2.	BORAVAK+KUHINJA	17,91 m ²
3.	SOBA	10,01 m ²
4.	SOBA	8,25 m ²
5.	WC	1,60 m ²
6.	KUPAONA	3,32 m ²
7.	TERASA	7,28x0,50=3,64 m ²
ukupino		49,72 m ²



TLOCRT STANA A1 1:100



SITUACIJA 1:1000



TLOCRT PRIZEMLJA 1:250

